

## Outdoor Enviromental Housings Especially for IP Cameras

SYS5140DH housings are designed to protect IP surveillance cameras and Mega pixels cameras from rough environment. It is constructed with die-cast aluminum body and hinged side opening cover for easy installation and service. SYS5140DH housings are equipped with PoE splitter (optional), heater and blower for your needs. Special M20 cable gland provide an easy access of Ethernet RJ45 connector without cutting the cable.



Easily Disassembled

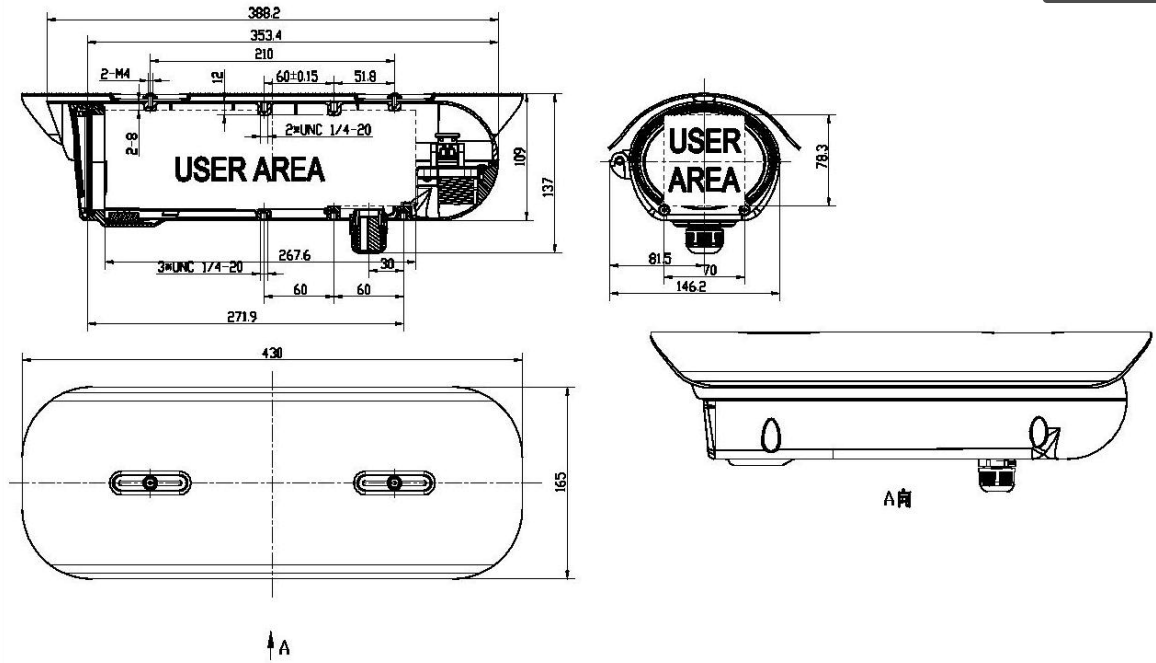
### FEATURES

- IP68 Weather proof standard
- Integrated PoE Splitter ( IEEE 802.3 )
- All Aluminum Construction
- Side opening for easy access.
- M20 Cable gland make easy connection for RJ45.
- Various options are available  
( IR LED illuminator / Window defroster)



Special M20 Cable Gland

# Drawings



# Technical Specifications

MECHANICAL	
Construction	Die-Cast Aluminum body with glass window and water resistant connector.
Color	Pantone Cool Gray 1C
Window	3mm Thick Glass
Dimension	See Drawings
IP Rating	IP 68
ENVIRONMENTAL and ELECTRICAL	
Using Temperature	-29°C ~ 50 °C ( -40°F ~ 122 °F )
Input Power	DC12V or PoE IEEE 802.3 48V (Optional)
Power Consumption	Max 8W (Heater 5W & Blower 3W) (Optional)